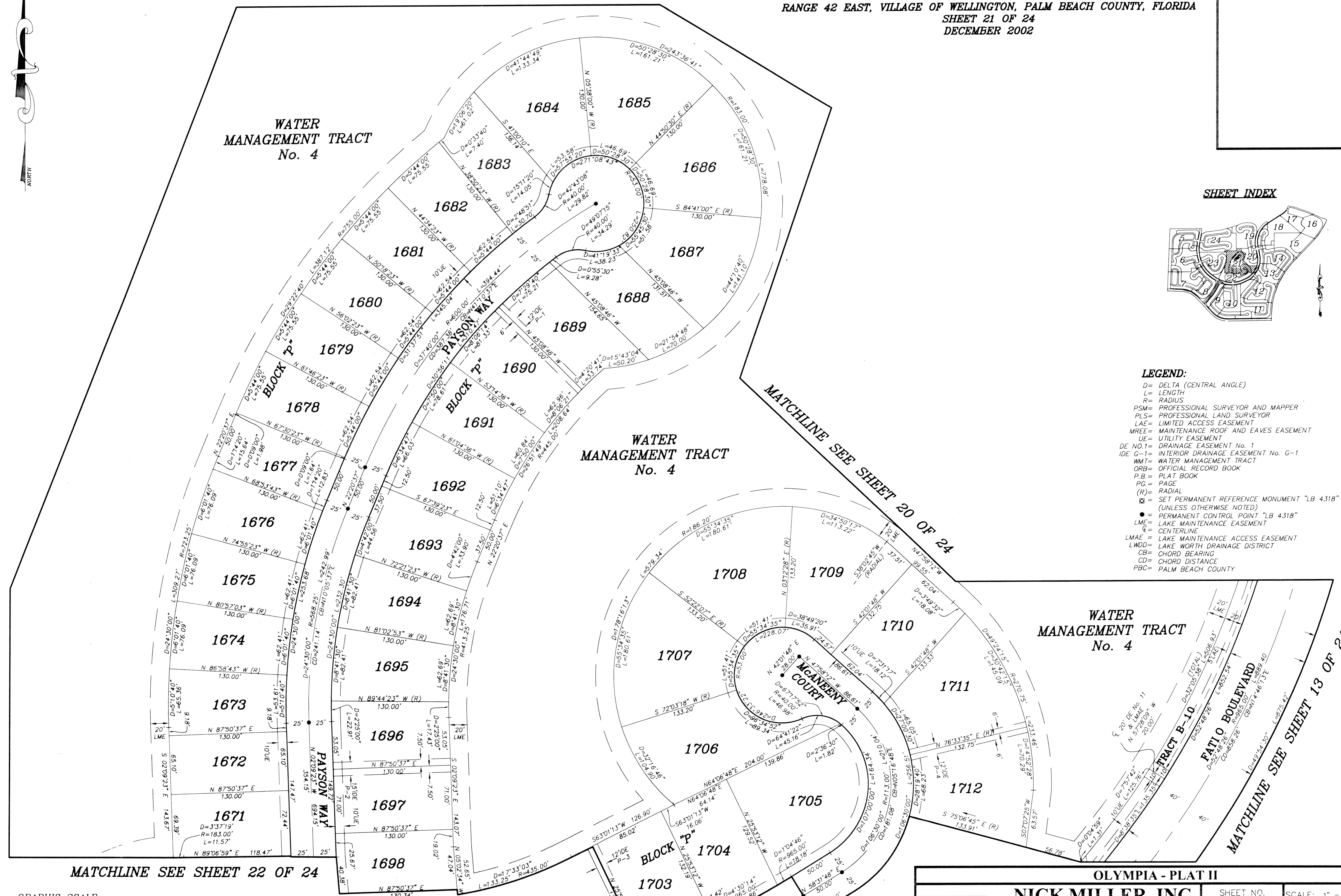
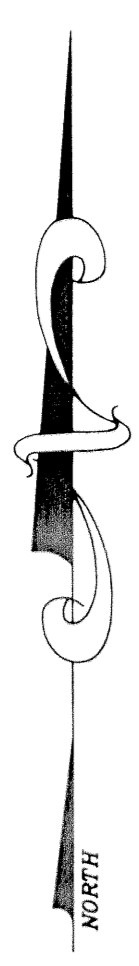


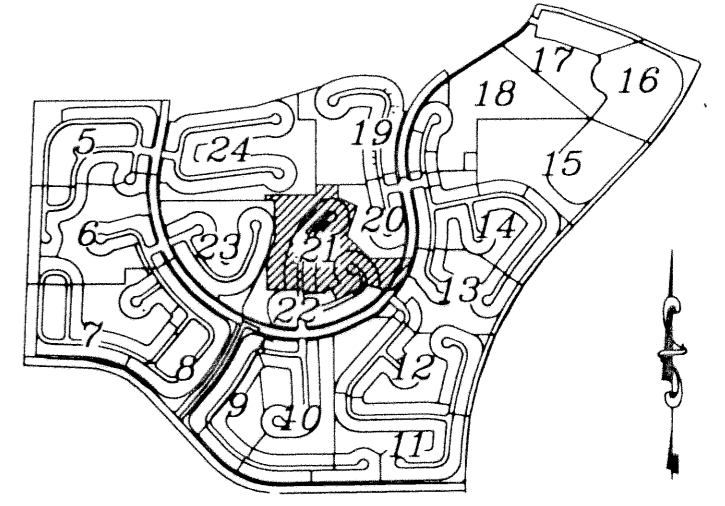
OLYMPIA - PLAT II

BEING A REPLAT OF A PORTION OF BLOCKS 19 AND 20 OF PALM BEACH FARMS COMPANY PLAT No. 3, AS RECORDED IN PLAT BOOK 2, PAGES 45 THROUGH 54 OF THE PUBLIC RECORDS OF PALM BEACH COUNTY FLORIDA. BEING IN PORTIONS OF SECTIONS 17, 18 AND 19, TOWNSHIP 44 SOUTH, RANGE 42 EAST, VILLAGE OF WELLINGTON, PALM BEACH COUNTY, FLORIDA SHEET 21 OF 24 DECEMBER 2002

MATCHLINE SEE SHEET 20 OF 24



SHEET INDEX

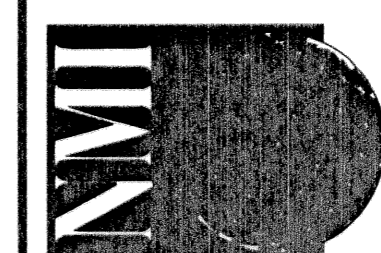
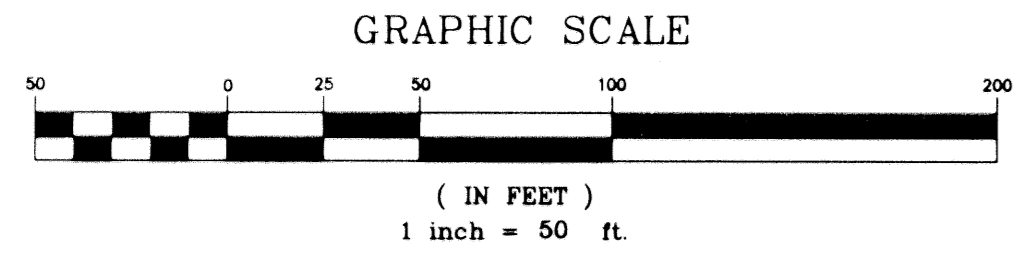


LEGEND:

- D= DELTA (CENTRAL ANGLE)
- L= LENGTH
- R= RADIUS
- PSM= PROFESSIONAL SURVEYOR AND MAPPER
- PLS= PROFESSIONAL LAND SURVEYOR
- LAE= LIMITED ACCESS EASEMENT
- MREE= MAINTENANCE ROOF AND EAVES EASEMENT
- UE= UTILITY EASEMENT
- DE NO.1= DRAINAGE EASEMENT No. 1
- IDE G-1= INTERIOR DRAINAGE EASEMENT No. G-1
- WMT= WATER MANAGEMENT TRACT
- ORB= OFFICIAL RECORD BOOK
- P.B.= PLAT BOOK
- PG.= PAGE
- (R)= RADIAL
- ☒= SET PERMANENT REFERENCE MONUMENT "LB 4318" (UNLESS OTHERWISE NOTED)
- = PERMANENT CONTROL POINT "LB 4318"
- LME= LAKE MAINTENANCE EASEMENT
- E= CENTERLINE
- LMAE= LAKE MAINTENANCE ACCESS EASEMENT
- LWDD= LAKE WORTH DRAINAGE DISTRICT
- CB= CHORD BEARING
- CD= CHORD DISTANCE
- PBC= PALM BEACH COUNTY

MATCHLINE SEE SHEET 22 OF 24

MATCHLINE SEE SHEET 22 OF 24



NICK MILLER, INC.
Surveying & Mapping Consultants
SUITE 105
2560 RCA BLVD.
PALM BEACH GARDENS, FLORIDA 33410
TEL 561 627-5200 FAX 561 627-0983
D.B.P.R. LICENSED BUSINESS No. 4318

OLYMPIA - PLAT II	SHEET NO.	SCALE: 1" = 50'
	21	DATE: DECEMBER 2002
		JOB NO. 1008.044
		FILE: PHASE II

MATCHLINE SEE SHEET 13 OF 24